



# *In Brief*

## Midyear Census 2006

### INTRODUCTION

In Brief summarises the results of the census of students in NSW government schools undertaken on Friday, 4 August 2006, and the census of NSW non-government schools undertaken by the Commonwealth Department of Education, Science and Training.

## 2006

### NSW GOVERNMENT SCHOOLS

Primary Schools	1,627
Separate Infants Schools	17
Central Schools	61
Community Schools	6
Secondary Schools	397
Schools for Specific Purposes (SSP's)	108
Environmental Education Centres	23
<b>Total government schools</b>	<b>2239</b>

### Preschools

Attached to primary/infants schools	99
Separate preschools	1
<b>Total preschools</b>	<b>100</b>

### NSW NON-GOVERNMENT SCHOOLS

Primary Schools	508
Secondary Schools	152
Primary/Secondary schools	220
Special schools	32
<b>Total non-government Schools</b>	<b>912</b>

### FULL-TIME EQUIVALENT (FTE) ENROLMENTS IN NSW GOVERNMENT SCHOOLS

Primary enrolments	432,660
Secondary enrolments	303,622
SSP enrolments	4,133
<b>Total enrolments</b>	<b>740,415</b>

### Aboriginal and Torres Strait Islander Students (A&TSI)

Total A&TSI enrolments	36,923.6
A&TSI enrolments as percent of all enrolments	5.0%

### Part-time students

Number of Part-time Students	2,425
FTE of Part-time Student enrolments	1,108.0

### Preschool Students

Number of Preschool Students	4,273
FTE of Preschool Student enrolments	2,444.7

TABLE 1 AND FIGURE 1

### ENROLMENTS (FTE) IN NSW GOVERNMENT SCHOOLS, 1961-2006

- Total full-time equivalent enrolments decreased by 1,163 from 741,578 in 2005 (0.2%).
- Total primary enrolments fell by 2,216 from 434,876 in 2005. This represents a 0.5% decrease.
- Total secondary enrolments increased by 1,044 from 302,578 in 2005, representing a 0.3% increase.

TABLE 2 AND FIGURE 2

### ENROLMENTS (FTE) BY REGION AND YEAR OF SCHOOLING IN NSW GOVERNMENT SCHOOLS, MIDYEAR 2006

- South Western Sydney Region enrolled the most students with (129,313.8) FTE enrolments. It had the highest primary enrolments (76,336) and the highest secondary enrolments (51,842.8).
- New England Region has the fewest students, with 22,629.5 FTE enrolments.
- The greatest increase in enrolments occurred in Northern Sydney Region, up by 1,343.9 enrolments (1.7%).
- North Coast Region experienced the greatest decrease in enrolments, with 967.1 fewer enrolments (1.4%) than in 2005.
- The greatest percentage decrease in enrolments occurred in New England Region, down by 2.5% (587.8 enrolments).
- The Kindergarten intake in 2006 was 61,995, down by 398 (0.6%) from 62,393 in 2005.
- Year 7 enrolments were 54,700, representing 88.9% of the 2005 Year 6 enrolments.

**TABLE 3 AND FIGURE 3**  
**ENROLMENTS (FTE) OF ABORIGINAL AND TORRES STRAIT ISLANDER STUDENTS BY REGION**

- Enrolments of Indigenous students increased by 2.7% from 35,966.4 in 2005.
- Indigenous students represented 5.0% of all enrolments.
- Enrolments of Indigenous students in primary schools increased by 1.6% from 22,596 in 2005.
- Enrolments of Indigenous students in secondary schools increased by 4.3% from 12,943.4 in 2005.
- Western NSW Region had the greatest number of Indigenous students, with 6,879 FTE enrolments, and New England had the greatest proportion of Indigenous students, with 17.2% of all enrolments.

**TABLE 4 AND FIGURE 4**  
**FTE APPARENT RETENTION RATES IN NSW GOVERNMENT SCHOOLS, 1982-2006**

- Apparent retention from Year 7 to Year 12 was 66.4% in 2006, a decrease of 0.8% from 2005.
- Apparent retention Year 7 to year 12 for males in 2006 (60.5%) remains over 10 percentage points lower than for females (72.5%). The Year 7-10 apparent retention rate in 2006 was 95.5 percent, 0.4 percentage points higher than 95.1% in 2005.

**TABLE 5**  
**NON-GOVERNMENT SCHOOLS IN NSW, ENROLMENTS (FTE) BY YEAR OF SCHOOLING, MIDYEAR 2006**

Primary enrolments	185,963
Secondary enrolments	183,939
Total enrolments	369,902

- Total enrolments in NSW non-government schools increased by 2,825.8 or 1.0% since 2005.
- Total primary enrolments increased by 422.3.
- Total secondary enrolments increased by 3,912.5 (2.0%).
- Total enrolments in Special schools increased from 1,417 in 2005 to 1,508 (6.4%).

**TABLE 6 AND FIGURE 5**  
**NON-GOVERNMENT SCHOOLS IN NSW, HISTORICAL ENROLMENTS (FTE), MIDYEAR 2006**

- FTE Enrolments in non-government schools represented 33.3% of all enrolments in NSW schools, compared with 33.1% in 2005.

**TABLE 7**  
**HEAD COUNT AND FULL-TIME EQUIVALENCE OF PART-TIME STUDENTS IN NSW GOVERNMENT SCHOOLS BY REGION AND YEAR OF SCHOOLING, MIDYEAR 2006**

- The number of part-time students increased by 21 (1.0%) from 2,404 in 2005 to 2,425 in 2006.
- The FTE enrolments of part-time students decreased by 31 (3%) from 1,139.3 in 2005 to 1,108 in 2006.

**TABLE 8**  
**HEAD COUNT AND FULL-TIME EQUIVALENCE OF STUDENTS IN NSW GOVERNMENT PRESCHOOLS BY REGION, MIDYEAR 2006**

- Enrolment in government preschools decreased by 34 (1%) from 4,307 in 2005.
- FTE enrolments in government preschools decreased by 36.9 (1%) from 2,481.6 in 2005.
- FTE Indigenous preschool enrolments were 275.2 as the same as in 2005 (275.4).

#### FURTHER INFORMATION

Additional information about schools and students in New South Wales will be available in Statistical Bulletin: Schools and Students in New South Wales, 2006.

Statistical publications produced by the Department of Education and Training can be obtained on the Internet at:

[http://www.det.nsw.edu.au/reports\\_stats/stats](http://www.det.nsw.edu.au/reports_stats/stats)

For further information regarding school and student statistics, please contact:

School Statistics Unit  
 Strategic Planning and Innovation Directorate  
 Telephone: 02 9561 8342  
 Facsimile: 02 9561 8055

**Table 1. Enrolments (FTE) in NSW Government Schools, 1961-2006**

Year	Primary	Secondary	SSP	Total
1961	441,366	169,517		610,883
1962	445,154	178,204		623,358
1963	444,252	181,999		626,251
1964	449,342	184,075		633,417
1965	457,158	196,273		653,431
1966	468,382	204,103		672,485
1967	479,605	221,184		700,789
1968	489,718	236,901		726,619
1969	497,373	248,442		745,815
1970	503,547	257,874		761,421
1971	504,110	267,603		771,713
1972	502,398	277,751		780,149
1973	495,112	281,988		777,100
1974	490,929	286,931		777,860
1975	490,769	298,357		789,126
1976	496,314	303,409		799,723
1977	506,661	303,049		809,710
1978	512,791	299,149		811,940
1979	516,807	290,795		807,602
1980	515,769	283,352		799,121
1981	507,094	283,481		790,575
1982	495,207	287,077		782,284
1983	477,811	300,793		778,604
1984	454,073	311,491	5,360	770,924
1985	438,953	316,650	5,414	761,017
1986	431,503	318,353	5,401	755,257
1987	431,403	318,657	5,024	755,084
1988	434,811	318,484	4,626	757,921
1989	434,098	310,765	4,400	749,263
1990	434,814	304,006	4,366	743,186
1991	438,218	304,087	4,112	746,417
1992	444,059	308,752	4,041	756,852
1993	445,238	308,909	3,901	758,048
1994	445,599	306,717	3,798	756,114
1995	446,722	305,396	3,789	755,907
1996	450,465	306,823	3,749	761,037
1997	451,560	308,923	3,690	764,173
1998	452,565	309,137	3,673	765,375
1999	453,454	308,116	3,762	765,332
2000	454,363	303,681	3,792	761,836
2001	451,096	301,771	3,873	756,740
2002	447,897	302,988	3,915	754,800
2003	443,213	304,034	3,938	751,185
2004	438,677	302,850	3,981	745,508
2005	434,876	302,578	4,124	741,578
2006	432,660	303,622	4,133	740,415

*Notes:* Since 1993 some students have enrolled part-time. All enrolments are reported in full-time equivalent units (FTEs) and include full-time and part-time students.  
Until 1984 students enrolled in schools for specific purposes (SSPs) were included in primary and secondary enrolment data, although until 1962 some of these students were not included at all.

**Table 2. Enrolments (FTE) by Region and Year of Schooling in NSW Government Schools,  
Midyear 2006**

Primary										
Region Name	Kindergarten	Year 1	Year 2	Year 3	Year 4	Year 5	Year 6	Support	Total	SSP
Hunter/Central Coast	9255	8827	8930	8904	8822	8868	9330	652	63588	539
Illawarra and South Coast	5575	5714	5834	5770	5755	5806	6151	461	41066	353
New England	1740	1704	1755	1832	1743	1843	1829	166	12612	70
North Coast	5019	5309	5259	5290	5469	5580	5853	358	38137	95
Northern Sydney	7440	7392	7026	6905	6880	6685	6617	261	49206	366
Riverina	2694	2658	2789	2786	2759	2834	2868	92	19480	237
South Western Sydney	10909	10644	10500	10617	10840	10695	10914	1217	76336	1135
Sydney	7579	7622	7047	6898	6661	6655	6517	397	49376	451
Western NSW	3188	3125	3230	3303	3258	3337	3327	386	23154	194
Western Sydney	8596	8475	8323	8261	8374	8361	8249	1066	59705	693
State Total	61995	61470	60693	60566	60561	60664	61655	5056	432660	4133

Secondary										
Region Name	Year 7	Year 8	Year 9	Year 10	Year 11	Year 12	Support	Total	Region as % of Total	State
Hunter/Central Coast	8665	8792	8516	8250	5866.1	4446.9	793	45329	109456	14.8%
Illawarra and South Coast	5373	5578	5482	5166	3847.2	3013.3	587	29046.5	70465.5	9.5%
New England	1901	1899	1801	1760	1333.3	1052.2	201	9947.5	22629.5	3.1%
North Coast	5707	5687	5826	5245	4180.1	3313.5	642	30600.6	68832.6	9.3%
Northern Sydney	5160	5085	5086	5264	5272.6	4640.2	388	30895.8	80467.8	10.9%
Riverina	2792	2861	2742	2502	1893.9	1494.6	166	14451.5	34168.5	4.6%
South Western Sydney	8972	9057	8965	8955	7242	6438.8	2213	51842.8	129313.8	17.5%
Sydney	5806	5971	5922	6106	5635.4	5115.3	830	35385.7	85212.7	11.5%
Western NSW	3298	3236	3137	3010	2201.2	1711.5	485	17078.7	40426.7	5.5%
Western Sydney	7026	7113	6903	6775	5453.9	4566	1207	39043.9	99441.9	13.4%
State Total	54700	55279	54380	53033	42925.7	35792.3	7512	303622	740415	

Notes: Students in distance education and opportunity classes (OC) are included with their appropriate grade levels. Students enrolled at the Distance Education Support Unit are included with secondary support classes in Sydney region.

**Table 3. Enrolments (FTE) of Aboriginal and Torres Strait Islander Students by Region  
and Year of Schooling in NSW Government Schools, Midyear 2006**

Region Name	Primary										SSP	
	Kinder	Year 1	Year 2	Year 3	Year 4	Year 5	Year 6	Support	Total	Total	Total	Total
Hunter/Central Coast	494	437	456	454	460	423	453	63	3240	3240	77	77
Illawarra and South Coast	342	326	340	329	320	332	321	67	2377	2377	24	24
New England	364	314	353	334	334	358	334	57	2448	2448	18	18
North Coast	547	532	526	478	493	541	521	67	3705	3705	33	33
Northern Sydney	20	17	12	10	15	16	18	1	109	109	8	8
Riverina	246	230	214	238	206	246	209	15	1604	1604	38	38
South Western Sydney	249	243	256	233	255	245	235	48	1764	1764	96	96
Sydney	115	150	120	132	141	154	128	25	965	965	43	43
Western NSW	579	580	592	587	578	623	573	156	4268	4268	53	53
Western Sydney	352	330	347	337	355	323	318	106	2468	2468	86	86
<b>State Total</b>	<b>3308</b>	<b>3159</b>	<b>3216</b>	<b>3132</b>	<b>3157</b>	<b>3261</b>	<b>3110</b>	<b>605</b>	<b>22948</b>	<b>22948</b>	<b>476</b>	<b>476</b>
As percent of Year	5.3%	5.1%	5.3%	5.2%	5.2%	5.4%	5.0%	12.0%	5.3%	5.3%	11.5%	11.5%

Region Name	Secondary										% of	
	Year 7	Year 8	Year 9	Year 10	Year 11	Year 12	Support	Total	Total	Total	Total	Total
Hunter/Central Coast	445	426	419	343	183.2	116.8	89	2022	5339	5339	4.9%	4.9%
Illawarra and South Coast	270	294	291	198	96.3	64.6	66	1279.9	3680.9	3680.9	5.2%	5.2%
New England	320	330	312	205	130.9	63.6	61	1422.5	3888.5	3888.5	17.2%	17.2%
North Coast	449	484	445	356	185.3	104	105	2128.3	5866.3	5866.3	8.5%	8.5%
Northern Sydney	24	28	16	17	16	3.8	1	105.8	222.8	222.8	0.3%	0.3%
Riverina	231	201	144	125	59	39	38	837	2479	2479	7.3%	7.3%
South Western Sydney	234	231	176	161	91	59.1	45	997.1	2857.1	2857.1	2.2%	2.2%
Sydney	138	144	144	132	81.4	48.2	25	712.6	1720.6	1720.6	2.0%	2.0%
Western NSW	552	533	507	400	270	146	150	2558	6879	6879	17.0%	17.0%
Western Sydney	306	332	286	215	120.6	69.8	107	1436.4	3990.4	3990.4	4.0%	4.0%
<b>State Total</b>	<b>2969</b>	<b>3003</b>	<b>2740</b>	<b>2152</b>	<b>1233.7</b>	<b>714.9</b>	<b>687</b>	<b>13499.6</b>	<b>36923.6</b>	<b>36923.6</b>	<b>5.0%</b>	<b>5.0%</b>
As percent of Year	5.4%	5.4%	5.0%	4.1%	2.9%	2.0%	9.1%	4.4%	5.0%	5.0%		

Notes: Students in distance education and support classes (OC) are included with their appropriate grade levels. Students enrolled at the Distance Education Support Unit are included with secondary support classes in Sydney region.

**Table 4. FTE Apparent Retention Rates in NSW Government Schools, 1982-2006**

Year	Years 7-9			Years 7-10			Years 7-11			Years 7-12			Years 10-11			Years 10-12		
	Male	Female	Total	Male	Female	Total	Male	Female	Total	Male	Female	Total	Male	Female	Total	Male	Female	Total
1982	96.7	97.6	97.1	85.6	87.8	86.7	33.7	41.0	37.2	25.2	31.6	28.3	40.5	47.5	44.0	30.5	37.2	33.8
1983	97.5	98.2	97.8	88.3	89.4	88.8	41.9	46.4	44.1	29.1	35.1	32.0	49.0	52.8	50.9	34.9	40.8	37.8
1984	97.4	97.8	97.6	89.0	90.3	89.6	43.5	48.4	45.9	33.8	38.4	36.1	49.3	54.2	51.7	39.5	43.8	41.6
1985	97.8	98.3	98.0	89.3	90.1	89.7	46.5	50.6	48.5	33.5	38.9	36.2	52.3	56.0	54.1	37.9	43.6	40.7
1986	97.9	98.0	97.9	89.4	91.3	90.3	48.0	52.6	50.2	36.7	41.7	39.1	53.7	58.3	56.0	41.2	46.2	43.7
1987	98.7	98.8	98.8	91.2	92.0	91.6	52.3	58.3	55.2	38.7	44.4	41.5	58.5	63.8	61.1	43.4	49.2	46.2
1988	99.8	99.7	99.8	91.8	93.9	92.8	58.8	65.3	62.0	42.5	49.4	45.9	64.5	70.9	67.6	47.6	54.1	50.8
1989	99.0	100.1	99.6	92.9	94.7	93.8	59.2	68.9	63.9	45.0	53.3	49.1	64.5	73.4	68.9	49.4	57.9	53.5
1990	98.9	99.4	99.1	93.3	95.6	94.4	63.0	73.1	67.9	46.3	56.8	51.4	67.8	77.2	72.4	50.5	60.5	55.4
1991	99.4	99.7	99.5	94.4	95.7	95.1	70.9	78.7	74.7	51.1	61.8	56.3	76.0	82.3	79.1	55.0	65.3	60.0
1992	100.5	101.5	101.0	96.1	97.0	96.5	76.4	83.8	80.0	59.5	69.6	64.4	80.9	87.5	84.1	63.7	72.8	68.2
1993	100.3	100.5	100.4	95.9	98.1	96.9	78.2	85.8	81.9	61.9	71.6	66.6	81.4	88.5	84.8	65.6	74.8	70.1
1994	98.5	99.3	98.9	95.4	96.0	95.7	74.2	84.2	79.1	61.2	72.1	66.5	77.5	85.8	81.5	63.7	74.3	68.8
1995	97.7	99.5	98.6	93.2	94.8	94.0	70.9	80.6	75.6	59.2	71.6	65.2	74.4	83.9	79.1	61.7	73.0	67.3
1996	98.7	98.5	98.6	93.3	95.2	94.2	70.2	79.9	74.9	57.8	69.1	63.3	75.3	84.3	79.7	60.6	71.9	66.2
1997	99.1	99.4	99.2	94.3	94.9	94.6	70.6	80.6	75.4	57.3	68.9	62.9	75.7	84.6	80.0	61.5	72.6	67.0
1998	99.1	99.5	99.3	94.1	95.7	94.9	70.7	80.6	75.5	57.4	69.9	63.5	75.0	84.9	79.8	61.5	73.4	67.4
1999	98.8	99.3	99.0	94.4	96.1	95.2	70.8	81.9	76.3	58.1	69.9	63.8	75.2	85.6	80.3	61.6	73.6	67.4
2000	99.0	99.6	99.3	94.1	95.2	94.6	70.2	80.4	75.2	57.0	70.5	63.6	74.4	83.6	78.9	60.6	73.6	67.0
2001	99.2	99.8	99.5	95.2	95.7	95.4	72.6	81.4	76.9	58.0	69.3	63.5	77.1	85.5	81.3	61.5	72.1	66.7
2002	99.7	99.9	99.8	95.4	96.4	95.9	74.8	82.8	78.7	59.9	70.7	65.2	78.6	86.6	82.5	63.7	74.3	68.9
2003	99.3	99.8	99.5	95.8	96.3	96.0	75.2	84.6	79.8	61.7	71.9	66.7	78.8	87.7	83.2	64.8	75.2	69.9
2004	99.1	99.5	99.3	94.7	96.0	95.4	74.3	83.7	78.9	61.9	73.4	67.5	77.5	87.0	82.2	64.9	76.1	70.4
2005	98.9	99.6	99.3	94.8	95.4	95.1	72.5	83.2	77.7	61.5	73.0	67.2	76.5	86.6	81.4	64.2	75.9	69.9
2006	99.8	100.0	99.9	95.2	95.8	95.5	73.1	83.1	78.0	60.5	72.5	66.4	77.1	87.1	82.0	63.9	75.5	69.6

Notes: All enrolments are reported in full-time equivalent units (FTEs), and include full-time and part-time students. Students enrolled in distance education classes are included with their appropriate grade levels.  
Care should be taken in the interpretation of apparent retention rates, because they do not take account of factors such as migration, interstate movements of students, transfers to and from non-government schools, part-time schooling, students repeating a year of schooling, or students pursuing other education and training pathways.

**Table 5. Enrolments (FTE) by Year of Schooling in NSW Non-government Schools, Midyear 2006**

<b>Primary</b>	<b>Male</b>	<b>Female</b>	<b>Total</b>
Kindergarten	13,503	12,957	26,460
Year 1	13,422	13,035	26,457
Year 2	13,311	12,867	26,178
Year 3	13,169	12,904	26,073
Year 4	13,207	13,042	26,249
Year 5	13,615	13,093	26,708
Year 6	13,629	13,212	26,841
Ungraded	699	297	996
<b>Total Primary</b>	<b>94,556</b>	<b>91,407</b>	<b>185,963</b>
Year 7	16,721	16,314	33,035
Year 8	16,699	16,059	32,758
Year 9	16,331	15,852	32,183
Year 10	16,289	16,067	32,356
Year 11	13,525	14,141	27,667
Year 12	12,138	13,078	25,215
Ungraded	485	242	726
<b>Total Secondary</b>	<b>92,188</b>	<b>91,751</b>	<b>183,939</b>
<b>Total, All Students</b>	<b>186,743</b>	<b>183,158</b>	<b>369,902</b>

Source: Australian Bureau of Statistics, Schools Australia 2006.

Notes: All enrolments are reported in full-time equivalent units (FTEs), and include full-time and part-time students.

**Table 6. Enrolments (FTE) in NSW Non-government Schools 1911-2006**

<b>Year</b>	<b>Enrolments</b>	<b>Year</b>	<b>Enrolments</b>
1911	61,550	1986	270,745
1921	78,460	1987	275,903
1931	92,285	1988	280,609
1941	105,319	1989	284,330
1951	133,019	1990	287,437
1961	201,147	1991	290,896
1971	222,195	1992	293,376
1972	221,400	1993	294,164
1973	219,918	1994	296,157
1974	219,100	1995	300,712
1975	218,868	1996	305,383
1976	218,348	1997	311,460
1977	218,775	1998	318,305
1978	220,763	1999	326,675
1979	224,941	2000	334,922
1980	230,384	2001	344,228
1981	237,853	2002	351,455
1982	245,007	2003	357,716
1983	251,506	2004	363,090
1984	257,599	2005	367,476
1985	264,297	2006	369,902

Source: Department of Education and Training; Official Yearbook of NSW; Australian Bureau of Statistics; and Commonwealth Department of Education, Science and Training.

Notes: School data for 1911-1961 include students in ACT schools. From 1993 the table includes full-time and part-time students, reported in full-time equivalent units (FTEs).

**Table 7. Part-time Students in NSW Government Schools, Head Count and Full-time Equivalence (FTE), by Region and Year of Schooling, Midyear 2006**

Region Name	Year 11		Year 12		Total	
	Students	FTE	Students	FTE	Students	FTE
Hunter/Central Coast	51	30.1	170	109.9	221	140.0
Illawarra and South Coast	135	48.2	117	71.3	252	119.5
New England	82	25.3	53	18.2	135	43.5
North Coast	100	46.1	150	79.5	250	125.6
Northern Sydney	104	53.6	243	127.2	347	180.8
Riverina	225	45.9	72	28.6	297	74.5
South Western Sydney	71	20.0	79	52.8	150	72.8
Sydney	64	35.4	141	82.3	205	117.7
Western NSW	313	81.2	103	45.5	416	126.7
Western Sydney	20	14.9	132	92.0	152	106.9
<b>State Total</b>	<b>1165</b>	<b>400.7</b>	<b>1260</b>	<b>707.3</b>	<b>2425</b>	<b>1,108.0</b>

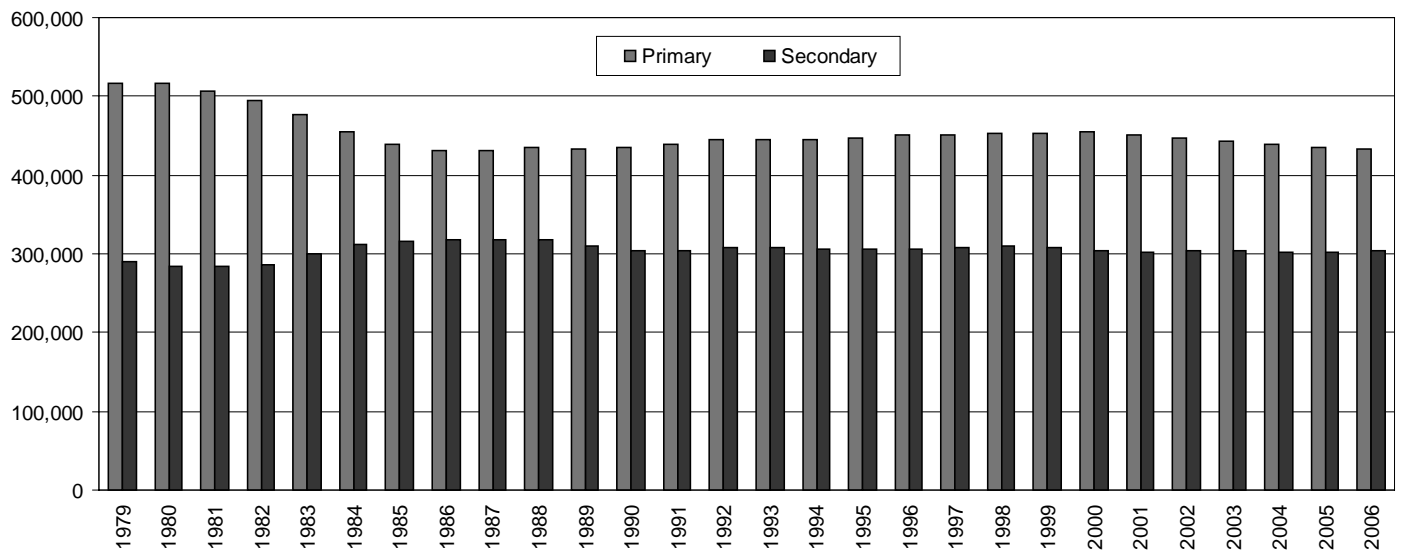
Notes: A student is classified as a part-time student if he/she undertakes less than 10 units of work in Year 11 or Year 12.

**Table 8. Students in NSW Government Preschools, Head Count and Full-time Equivalence (FTE), by Region, Midyear 2006**

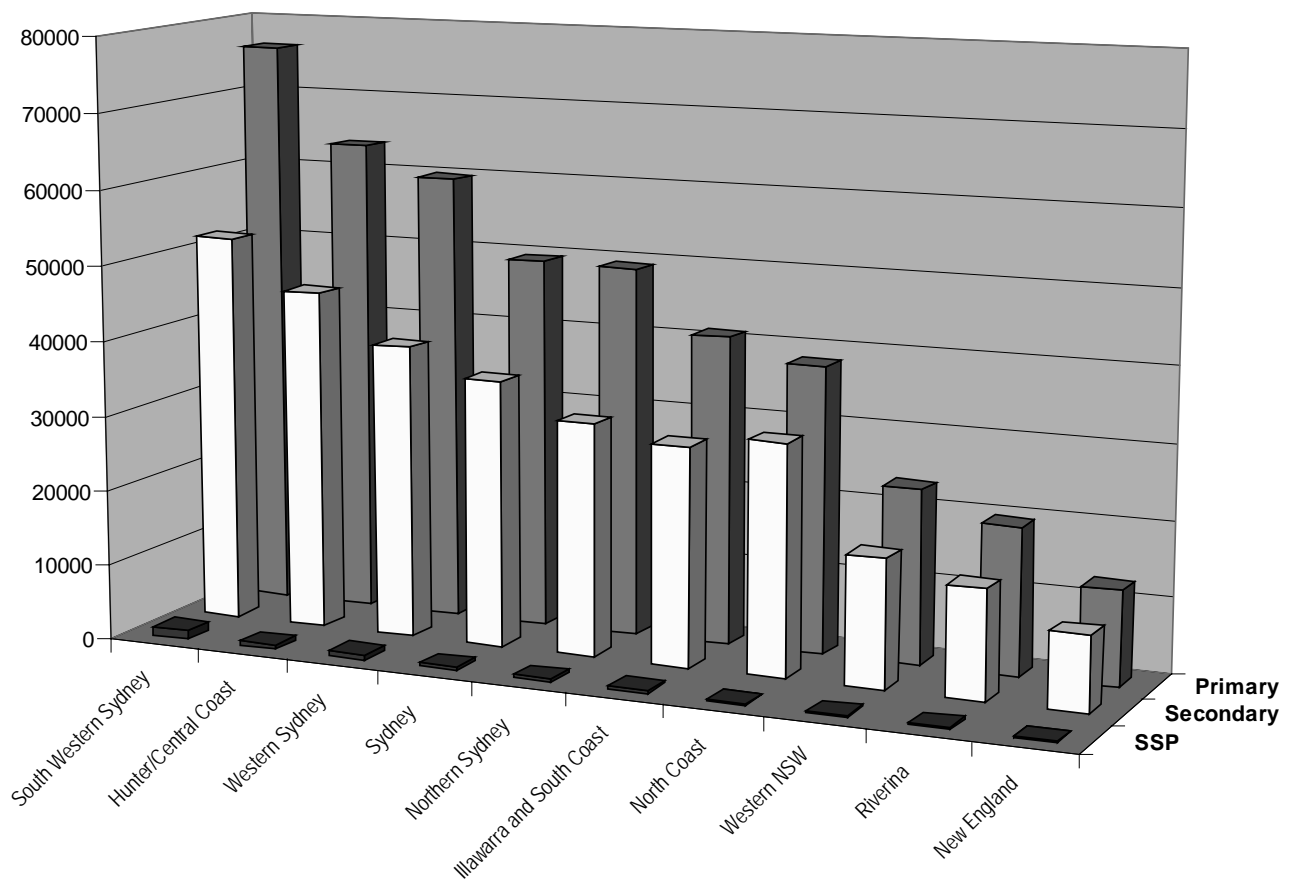
Region Name	All Students		Aboriginal and Torres Strait Islander Students		
	Students	FTE	Students	FTE	% of Total FTE
Hunter/Central Coast	498	259.3	50	26.3	10.1%
Illawarra and South Coast	337	145.5	37	19.3	13.3%
New England	72	53.5	24	22.5	42.1%
North Coast	171	83.7	51	23.8	28.4%
Riverina	91	44.4	20	10.9	24.5%
South Western Sydney	1180	626.6	57	43	6.9%
Sydney	567	449.4	15	12.8	2.8%
Western NSW	256	185.9	126	88.8	47.8%
Western Sydney	1101	596.4	42	27.8	4.7%
<b>State Total</b>	<b>4,273</b>	<b>2,444.7</b>	<b>422</b>	<b>275.2</b>	<b>11.3%</b>



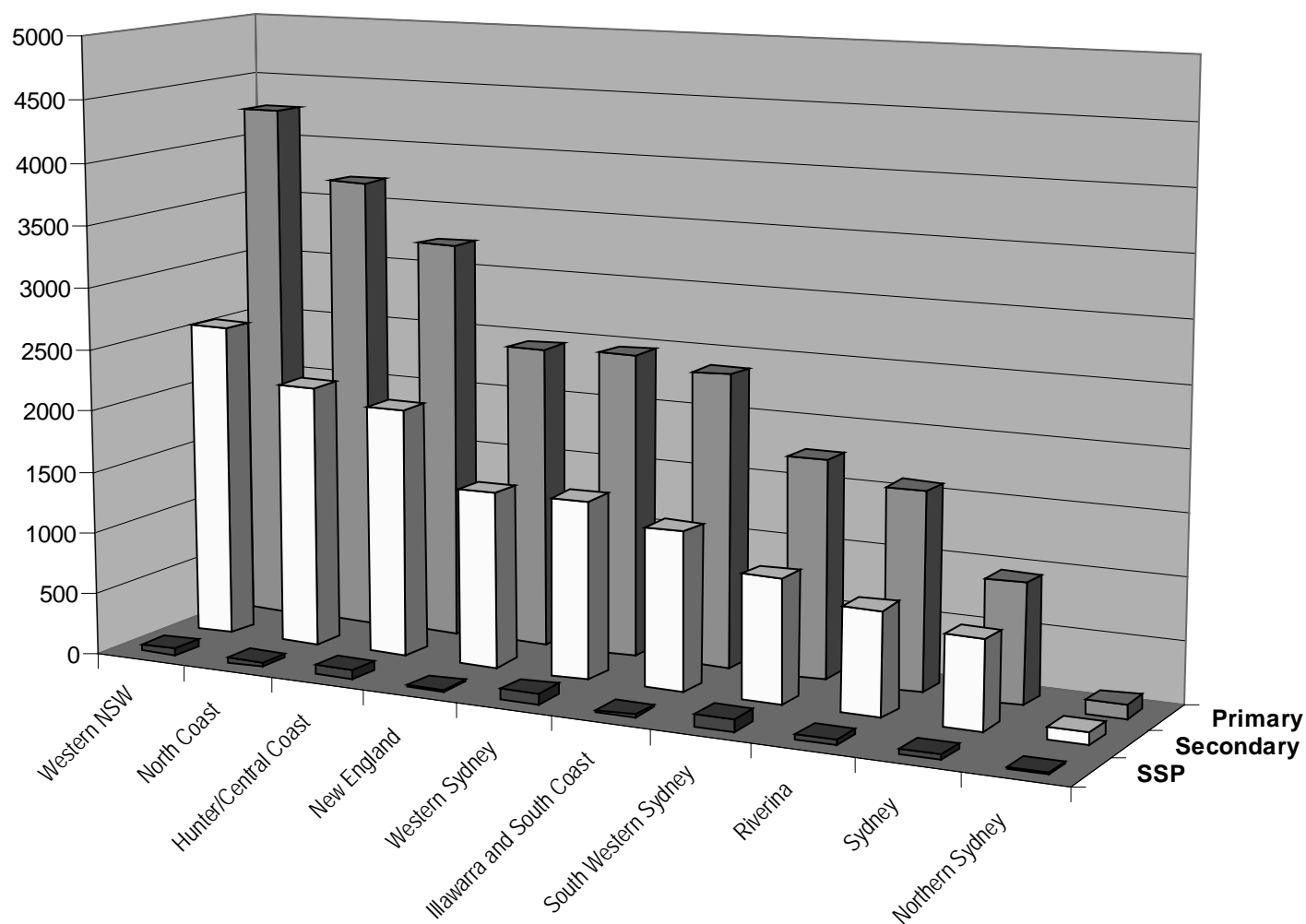
**Figure 1. Primary and Secondary Enrolments in NSW Government Schools, 1979-2006**



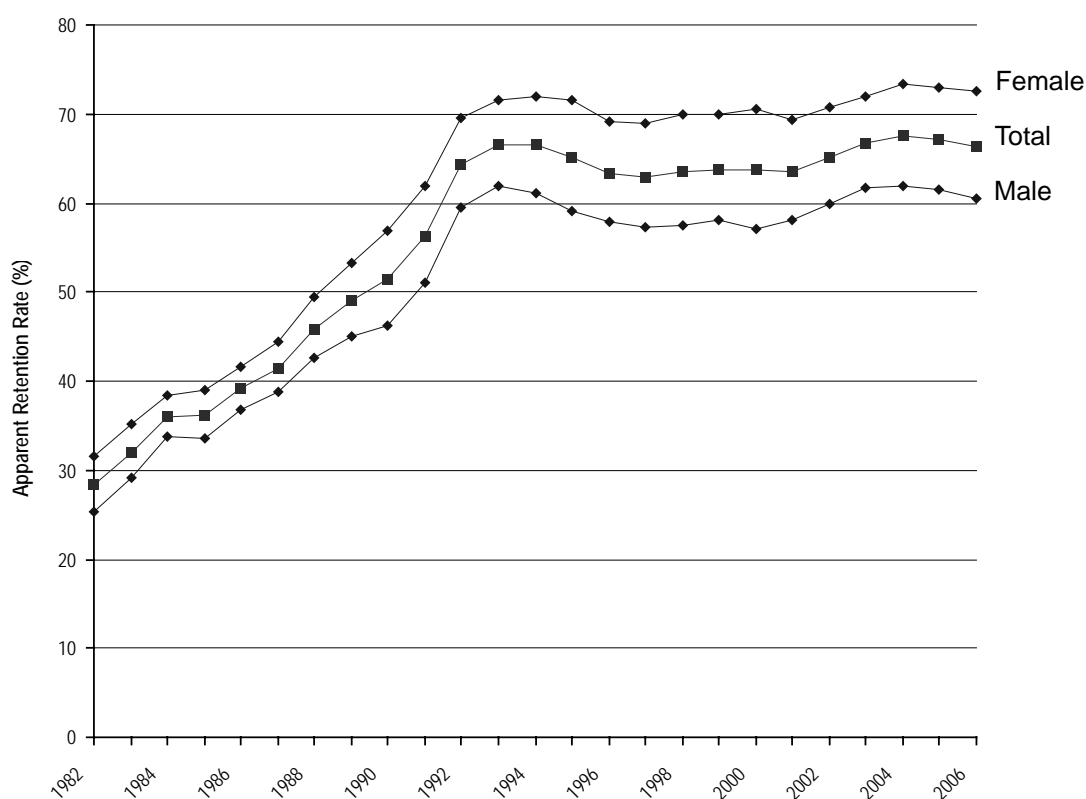
**Figure 2. Enrolments in NSW Government Schools by Region and Level of Education, Midyear 2006**



**Figure 3. Aboriginal and Torres Strait Islander Student Enrolments by Region and Level of Education, Midyear 2006**



**Figure 4. FTE Apparent Retention Rate Year 7 to Year 12 in NSW Government Schools 1982-2006**



**Figure 5. Total School Enrolments (FTE) by Sector, 1954-2006**

